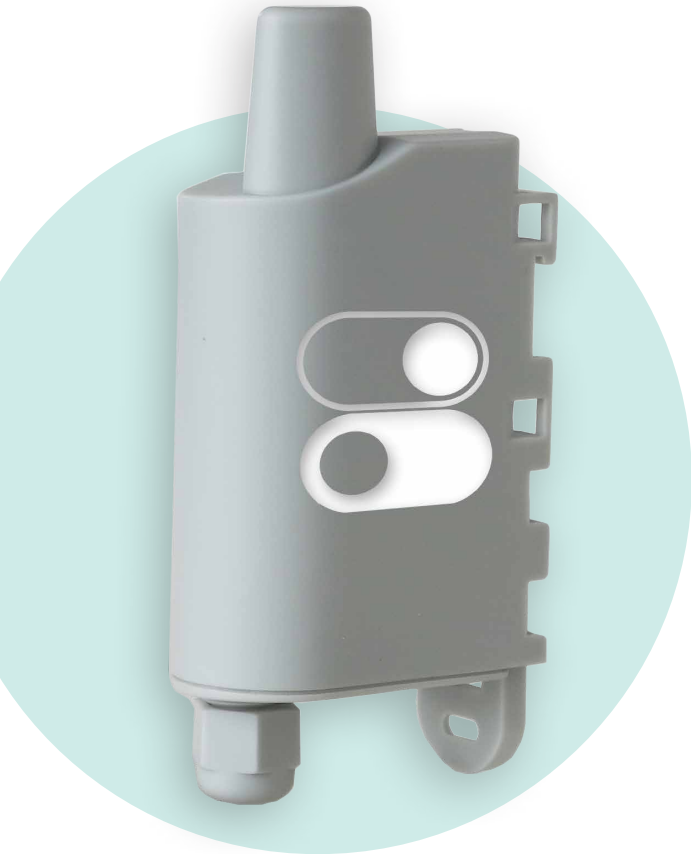


DRY CONTACTS



FUNCTION

Dry Contact | 0-1 status

Report 0-1 statuses and control relays.



ACT

- Activate or restart machines and equipment items remotely



ALERT

- Provide feedback about faults, level alerts
- Detect an intruder's presence, or detect an action
- Control access and break-ins



MONITOR

- Count the number of changes in status

BENEFITS

- 4 configurable inputs/outputs
- Locally and remotely configurable
- Low power consumption for optimal autonomy
- Develop new preventive maintenance services, alerts services, or analysis services.



PRODUCT USES



Monitoring of the occupancy of the rooms in your building in order to optimize the management of the services.



Broadcast information instantly on a malfunction of an escalator, an elevator...

TECHNICAL SPECIFICATIONS

- Periodic modes or event-based modes
 - Replaceable battery
- Dimensions: 105 x 50 x 27 mm
 - Box: IP67 (IP68 on request)
- Integrated fastening system: DIN rail, tube, wall, flange
- Zone: sigfox: RC1 / LoRaWAN: EU863-870 / W-Mbus: 868
- Operating temperature range: -25°C / +70°C
 - Weight: 90g
 - Standards: Directive 2014/53/EU (RED)
- Product error alert, configuration error, low battery
 - Configurable Life Screen