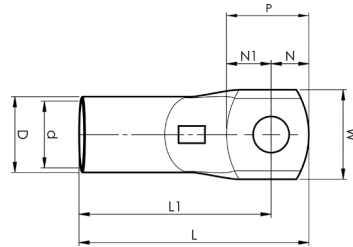




ELPRESS®

Product Datasheet

KRFS tube terminals 50 - 400 mm² with narrow palm



| mm ² (Cu) | AWG Cu | Name | Screw | W (mm) | d | D | N | N1 | P | L | L1 | t | s | Die | Pcs/pack | Tool |
|----------------------|--------|-------------|-------|--------|------|------|----|------|------|-----|----|-----|----|------|----------|----------------------|
| 50 | 1/0 | KRFS50-6 | M6 | 15 | 11 | 14,5 | 11 | 11,5 | 22,5 | 51 | 40 | 4 | 19 | 14,5 | 100 | PVL350, V600, DV1300 |
| 50 | 1/0 | KRFS50-8 | M8 | 16,5 | 11 | 14,5 | 11 | 11,5 | 22,5 | 51 | 40 | 3,8 | 19 | 14,5 | 100 | PVL350, V600, DV1300 |
| 50 | 1/0 | KRFS50-10 | M10 | 16,5 | 11 | 14,5 | 11 | 12,5 | 23,5 | 52 | 41 | 3,8 | 19 | 14,5 | 100 | PVL350, V600, DV1300 |
| 70 | 2/0 | KRFS70-6 | M6 | 17 | 13 | 17 | 11 | 12,5 | 23,5 | 58 | 47 | 4,5 | 22 | 17 | 50 | PVL350, V600, DV1300 |
| 70 | 2/0 | KRFS70-8 | M8 | 17 | 13 | 17 | 11 | 12,5 | 23,5 | 58 | 47 | 4,5 | 22 | 17 | 50 | PVL350, V600, DV1300 |
| 70 | 2/0 | KRFS70-10 | M10 | 19 | 13 | 17 | 11 | 12,5 | 23,5 | 58 | 47 | 3,9 | 22 | 17 | 50 | PVL350, V600, DV1300 |
| 95 | 4/0 | KRFS95-6 | M6 | 19 | 15 | 20 | 11 | 14 | 25 | 63 | 52 | 5,7 | 25 | 20 | 50 | V600, DV1300, DV250 |
| 95 | 4/0 | KRFS95-8 | M8 | 19 | 15 | 20 | 11 | 14 | 25 | 63 | 52 | 5,7 | 25 | 20 | 50 | V600, DV1300, DV250 |
| 95 | 4/0 | KRFS95-10 | M10 | 19 | 15 | 20 | 11 | 14 | 25 | 63 | 52 | 5,7 | 25 | 20 | 50 | V600, DV1300, DV250 |
| 95 | 4/0 | KRFS95-12 | M12 | 20 | 15 | 20 | 12 | 15 | 27 | 64 | 52 | 5,4 | 25 | 20 | 50 | V600, DV1300, DV250 |
| 120 | 250 | KRFS120-6 | M6 | 19 | 17 | 22 | 11 | 13,5 | 24,5 | 67 | 56 | 5,9 | 27 | 22 | 25 | V600, DV1300, DV250 |
| 120 | 250 | KRFS120-8 | M8 | 19 | 17 | 22 | 11 | 13,5 | 24,5 | 67 | 56 | 5,9 | 27 | 22 | 25 | V600, DV1300, DV250 |
| 120 | 250 | KRFS120-10 | M10 | 19 | 17 | 22 | 11 | 13,5 | 24,5 | 67 | 56 | 5,9 | 27 | 22 | 25 | V600, DV1300, DV250 |
| 120 | 250 | KRFS120-12 | M12 | 22 | 17 | 22 | 12 | 15 | 27 | 70 | 58 | 5 | 27 | 22 | 25 | V600, DV1300, DV250 |
| 150 | 300 | KRFS150-6 | M6 | 25 | 19 | 25 | 11 | 14 | 25 | 74 | 63 | 6,3 | 32 | 25 | 25 | V600, DV1300, DV250 |
| 150 | 300 | KRFS150-8 | M8 | 25 | 19 | 25 | 11 | 14 | 25 | 74 | 63 | 6,3 | 32 | 25 | 25 | V600, DV1300, DV250 |
| 150 | 300 | KRFS150-10 | M10 | 25 | 19 | 25 | 11 | 14 | 25 | 74 | 63 | 6,3 | 32 | 25 | 25 | V600, DV1300, DV250 |
| 150 | 300 | KRFS150-12 | M12 | 25 | 19 | 25 | 12 | 15 | 27 | 76 | 64 | 6,3 | 32 | 25 | 25 | V600, DV1300, DV250 |
| 185 | 350 | KRFS185-10 | M10 | 27 | 21 | 27 | 11 | 13 | 24 | 79 | 68 | 6,6 | 37 | 27 | 20 | DV1300, DV250 |
| 185 | 350 | KRFS185-12 | M12 | 27 | 21 | 27 | 12 | 15 | 27 | 82 | 70 | 6,6 | 37 | 27 | 20 | DV1300, DV250 |
| 240 | 500 | KRFS240A-10 | M10 | 29 | 22,5 | 29 | 15 | 19 | 34 | 91 | 76 | 7,7 | 37 | 30 | 10 | DV1300, DV250 |
| 240 | 500 | KRFS240A-12 | M12 | 29 | 22,5 | 29 | 15 | 19 | 34 | 91 | 76 | 7,7 | 37 | 30 | 10 | DV1300, DV250 |
| 240 | 500 | KRFS240A-16 | M16 | 29 | 22,5 | 29 | 20 | 19 | 39 | 96 | 76 | 7,7 | 37 | 30 | 10 | DV1300, DV250 |
| 300 | 600 | KRFS300A-10 | M10 | 31 | 24,5 | 31,5 | 15 | 19 | 34 | 94 | 79 | 8,6 | 40 | 32 | 10 | DV1300, DV250 |
| 300 | 600 | KRFS300A-12 | M12 | 31 | 24,5 | 31,5 | 15 | 19 | 34 | 94 | 79 | 8,6 | 40 | 32 | 10 | DV1300, DV250 |
| 300 | 600 | KRFS300A-16 | M16 | 31 | 24,5 | 31,5 | 20 | 19 | 39 | 99 | 79 | 8,6 | 40 | 32 | 10 | DV1300, DV250 |
| 400 | 800 | KRFS400A-12 | M12 | 38 | 30 | 38 | 15 | 24 | 39 | 114 | 99 | 8,8 | 52 | 38 | 10 | DV1300, DV250 |
| 400 | 800 | KRFS400A-16 | M16 | 38 | 30 | 38 | 20 | 39 | 39 | 114 | 94 | 8,8 | 52 | 38 | 10 | DV1300, DV250 |

t = palm thickness, s = strip length



ELPRESS®