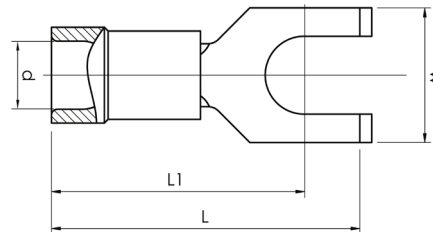




# ELPRESS®

## Product Datasheet



### Flanged fork terminals 0.5 - 2.5 mm<sup>2</sup>

mm <sup>2</sup> (Cu)	AWG Cu	Name	Screw	W (mm)	d	L	L1	t	s	Tool	Insulation material	Easy Entry	Material	Pcs/pack	Tool
0,5-1,5	20-16	A1537GB	M3,5	6,2	4	21	17,5	0,7	7	GSA0760	PC	Yes	Cu, Cu/Sn	100	GSA0760
0,5-1,5	20-16	A1543GB	M4	6,2	4	21	17,5	0,7	7	GSA0760	PC	Yes	Cu, Cu/Sn	100	GSA0760
1,5-2,5	16-14	A2543GB	M4	6,2	4,5	21	17,5	0,8	7	GSA0760	PC	Yes	Cu, Cu/Sn	100	GSA0760
1,5-2,5	16-14	A2553GB	M5	9	4,5	22,5	17,5	0,8	7	GSA0760	PC	Yes	Cu, Cu/Sn	100	GSA0760

t = palm thickness, s = strip length



# ELPRESS®